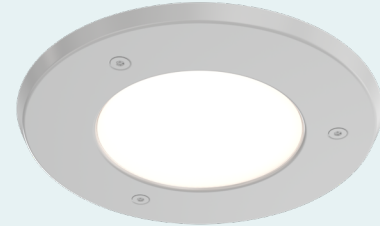


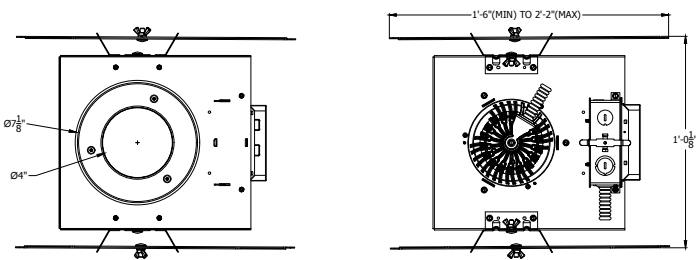
- Ligature resistant construction for use in behavioral health environments
- 4" Aperture Recessed profile for use in hard ceilings, and grid ceilings
- 6 standard CCT color temperatures
- Wet location, IK10, IP66 when sealed from room side
- Pairs with SensorSwitch™ IWS for local or zonal control with other luminaires

### TYPICAL APPLICATIONS

Behavioral health resident room, lavatory, nursing area, activity area



### Dimensions



### Performance Data

Lumen values are from photometric tests from an accredited laboratory. Data is considered to be representative of the configurations shown, within generally accepted industry tolerances. Performance data based upon 3500K

#### BASED ON 80CRI 3500K MD CPL

| NBDO4 STWH     |      |      |      |      |      |
|----------------|------|------|------|------|------|
| NOMINAL LUMENS | 1000 | 1500 | 2000 | 2500 | 3000 |
| DELIVERED      | 1086 | 1521 | 2019 | 2456 | 2834 |
| WATTAGE        | 13.4 | 19.4 | 27.5 | 36.4 | 45.8 |
| EFFICACY       | 81.1 | 78.5 | 73.4 | 67.5 | 61.9 |

## Catalog Number

**Example:** NBDO4 MD 2000LM CPL F MVOLT 35K 90CRI ZT DARK GWAM TXPS

| Series* |                                 | Distribution* |                | Direct Lumen Output* |              | Lens* |                     | Mounting*      |                   | Voltage*             |          | LED Color Temperature* |       |
|---------|---------------------------------|---------------|----------------|----------------------|--------------|-------|---------------------|----------------|-------------------|----------------------|----------|------------------------|-------|
| NBDO4   | 4IN Behavioral Health Downlight | MD<br>WD      | Medium<br>Wide | 1000LM               | 1,000 Lumens | CPL   | Clear Polycarbonate | F <sup>2</sup> | Flanged or Grid   | 120                  | 120V     | 18K <sup>7</sup>       | 1800K |
|         |                                 |               |                | 1500LM               | 1,500 Lumens |       |                     |                |                   | 277                  | 277V     | 27K                    | 2700K |
|         |                                 |               |                | 2000LM               | 2,000 Lumens |       |                     | GB             | Flangeless Mud-In | 347 <sup>4,5,6</sup> | 347V     | 30K                    | 3000K |
|         |                                 |               |                | 2500LM               | 2,500 Lumens |       |                     |                |                   | MVOLT                | 120-277V | 35K                    | 3500K |
|         |                                 |               |                | 3000LM <sup>1</sup>  | 3,000 Lumens |       |                     |                |                   | 40K                  | 4000K    | 50K                    | 5000K |

| LED Color Rendering |                | Control Input*   |                               | Minimum Dimming Level* |   | Filters            |   | Fusing           |                 | Emergency                      |  |   |
|---------------------|----------------|--|-------------------------------|------------------------|---|--------------------|---|------------------|-----------------|--------------------------------|--|---|
| 80CRI               | 80CRI          | ZT   | 0-10V control                 | DARK <sup>1</sup>      | Constant Current, Dimming to <1%                          | RFI <sup>1,6</sup> | Radio Frequency Interference                                    | GLR <sup>1</sup> | Fast Blown Fuse | EMB310T20 <sup>1,6,10,11</sup> |  | Self contained, 90 minute emergency battery pack. 0°C (32°F) to 55°C (131°F). Meets CA Title 20 standards |
| 90CRI               | 90CRI          | DALI   | DALI                          |                        |   |                    |   |                  |                 |                                |  |   |
|                     |                | NLIGHT <sup>6,8,9,10</sup>   | nLIGHT enabled                |                        |   |                    |   |                  |                 |                                |  |   |
|                     |                | NLTAIR2 <sup>6,9,10</sup>  | nLIGHT Air (Wireless) Enabled |                        |   |                    |   |                  |                 | GTD <sup>1,6,11</sup>          |  | Generator Transfer Device   |
| Certification       |                | Finish*  |                               | Mounting Hardware      |   | Visible Hardware   |   |                  |                 |                                |  |   |
| CP <sup>10</sup>    | Chicago Plenum | GWAM   | Gloss White Antimicrobial     | <BLANK>                | For Ceilings up to 1 1/4" thick Ceiling Thickness Adapter | TXPS               | Painted TORX® tamper resistant screws to match luminaire finish |                  |                 |                                |  |   |
|                     |                | GBKAM  | Gloss Black Antimicrobial     |                        |   |                    |   |                  |                 |                                |  |   |
|                     |                | RALTB  | RAL Color TBD                 |                        |   |                    |   |                  |                 |                                |  |   |
|                     |                | *RALTB for pricing only. Replace with applicable RAL call out when ready to order. See the <a href="#">Architectural RAL Color Brochure</a> for available options. |                               |                        |   |                    |   |                  |                 |                                |  |   |

\* Required Fields

## Notes

- Not available with 347
- Requires TXPS Visible Hardware
- Only available with AMF
- Only available with ZT
- Not available with DARK
- Not available with CP
- Not available with 80CRI
- Not available with MVOLT
- Not available with EMB310T20
- Not available with GTD
- Not available with RFI and GLR

## Specifications

### Housing

Luminaire housing constructed of 16-gauge galvanized steel with telescopic mounting bars with maximum 26" and minimum 15" extension and 4" vertical adjustment.

### Lens

Impact resistant polycarbonate lens with 0.25" nominal thickness. Available with patented pending flanged or flangeless (GB) trim. If IP66 rating is required, no-pick caulk (or vandal resistant equivalent caulk) is recommended. See Installation Instructions for more detail. Lens and trim secured with tamper resistant center pin reject TORX fasteners to prevent intrusion and mitigate ligature.

### Finish

Painted in durable polyester powder coat paint with antimicrobial\* additive. Available in two standard solid matte colors. Brushed aluminum with clear coat finish also available.

\*Antimicrobial properties are built in to inhibit the growth of bacteria that may affect this product. The antimicrobial properties do not protect users or others against bacteria, viruses, germs, or other pathogens.

### Mounting

Luminaire suitable for installations in ceilings up to 1.25 inches thick (specify ceiling thickness adaptor kit for ceilings up to 2.25 thick).

### Source

Static white in 1800K, 2700K, 3000K, 3500K, 4000K, or 5000K in either 80CRI or 90CRI standard. All LED within a 2.5 step MacAdam ellipse.

### LED Life

Greater than 80% LED lumen maintenance at 60,000 hours (L80>60,000).

### Fixture Weight

Weight may vary depending upon options or accessories selected.

### Environment

Wet Location standard, IK10, IP66.

### Certification

CSA certified to meet U.S. and Canadian standards (UL1598 and UL8750) and CAN/CSA C22.2 No. 250.0. Non-IC rated

Certified for NSF Splash Zone 2 with all finishes except RALTB.D.

### Controls

Optional integrated nLight® controls make each fixture addressable - allowing it to digitally communicate with other nLight enabled controls such as dimmers, switches, occupancy sensors, and photocontrols. Connection to nLight is simple. It can be accomplished with remote nLight AIR wireless or through standard Cat-5 cabling (cabling "by others"). nLight offers unique plug-and-play convenience as devices and luminaires automatically discover each other, while nLight AIR is commissioned easily through an intuitive mobile app.

### Government Procurement

BAA – Buy American Act: This product is available in a version that qualifies as a domestic end product under the Buy American Act as implemented in the FAR and DFARS. BABA – Build America Buy America: This product is available in a version that qualifies as produced in the United States under the definitions of the Build America, Buy America Act, as implemented by 2 C.F.R. Part 184 and other agency implementing regulations, including Department of Transportation regulations. Please refer to [www.acuitybrands.com/resources/buy-american](http://www.acuitybrands.com/resources/buy-american) for additional information.

### Warranty

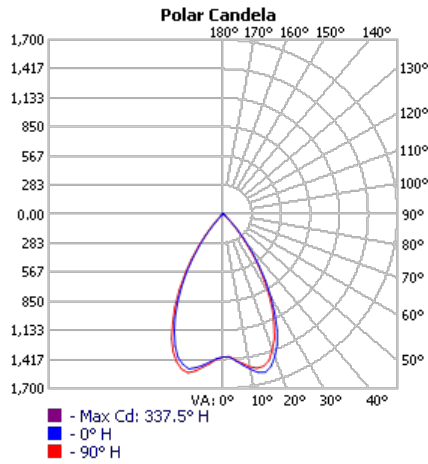
5-year limited warranty. This is the only warranty provided and no other statements in this specification sheet create any warranty of any kind. All other express and implied warranties are disclaimed. Complete warranty terms are located at: [www.acuitybrands.com/support/warranty/terms-and-conditions](http://www.acuitybrands.com/support/warranty/terms-and-conditions)

### Notes:

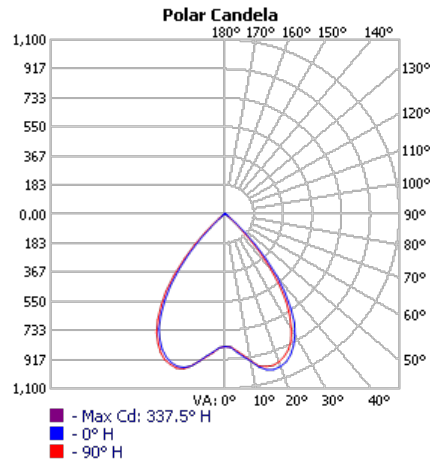
Actual performance may differ as a result of end-user environment and application. All values are design or typical values, measured under laboratory conditions at 25 °C. Specifications subject to change without notice.

## Distribution

### DISTRIBUTION NBDO4 MD



### DISTRIBUTION NBDO4 WD



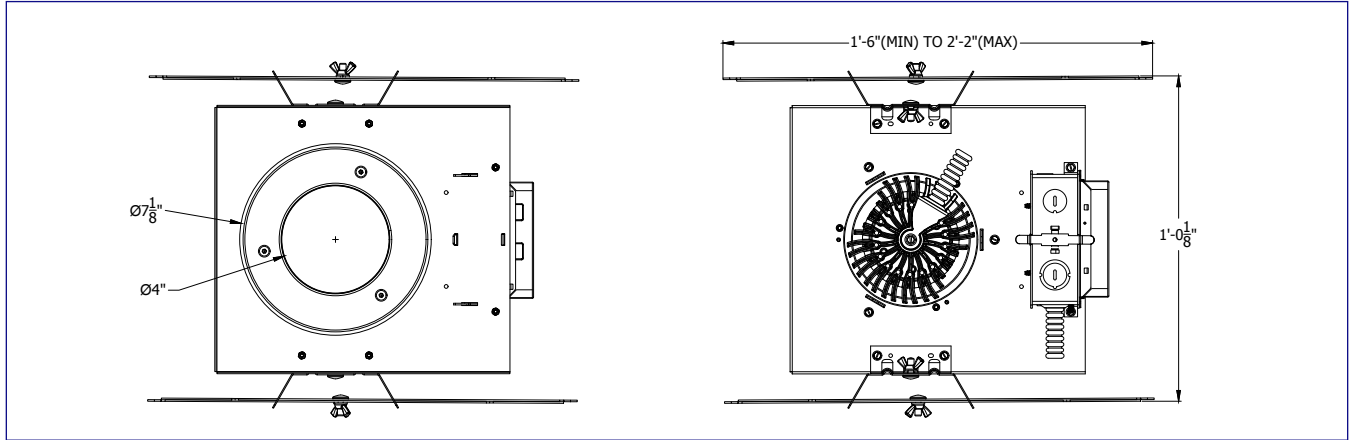
### LUMEN MULTIPLIER TABLE FOR CCT & CRI

This table can be used to approximate the lumen values at different kelvin temperatures. Data table baseline is 3500K 80CRI photometry.

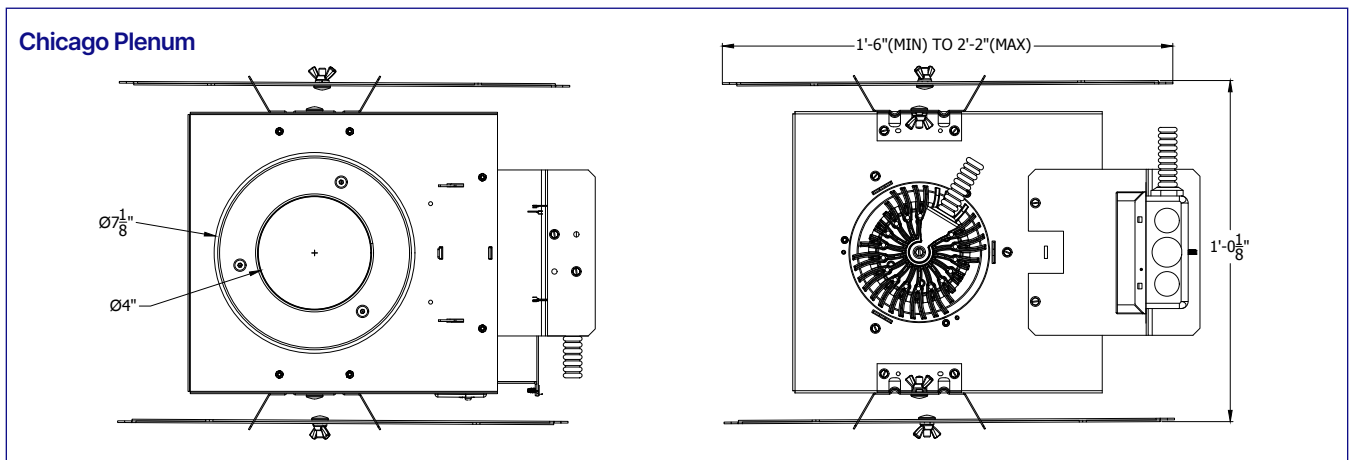
| CRI   | CCT | Scale Factor |
|-------|-----|--------------|
| 80CRI | 27K | 0.96         |
|       | 30K | 1.00         |
|       | 35K | 1.00         |
|       | 40K | 1.01         |
|       | 50K | 1.07         |
| 90CRI | 18K | 0.38         |
|       | 27K | 0.80         |
|       | 30K | 0.83         |
|       | 35K | 0.85         |
|       | 40K | 0.87         |
|       | 50K | 0.91         |

| Distribution and Lens Multiplier |      |
|----------------------------------|------|
| MD                               | 1.00 |
| WD                               | 0.94 |
| CPL                              | 1.00 |
| CAL                              | 1.01 |

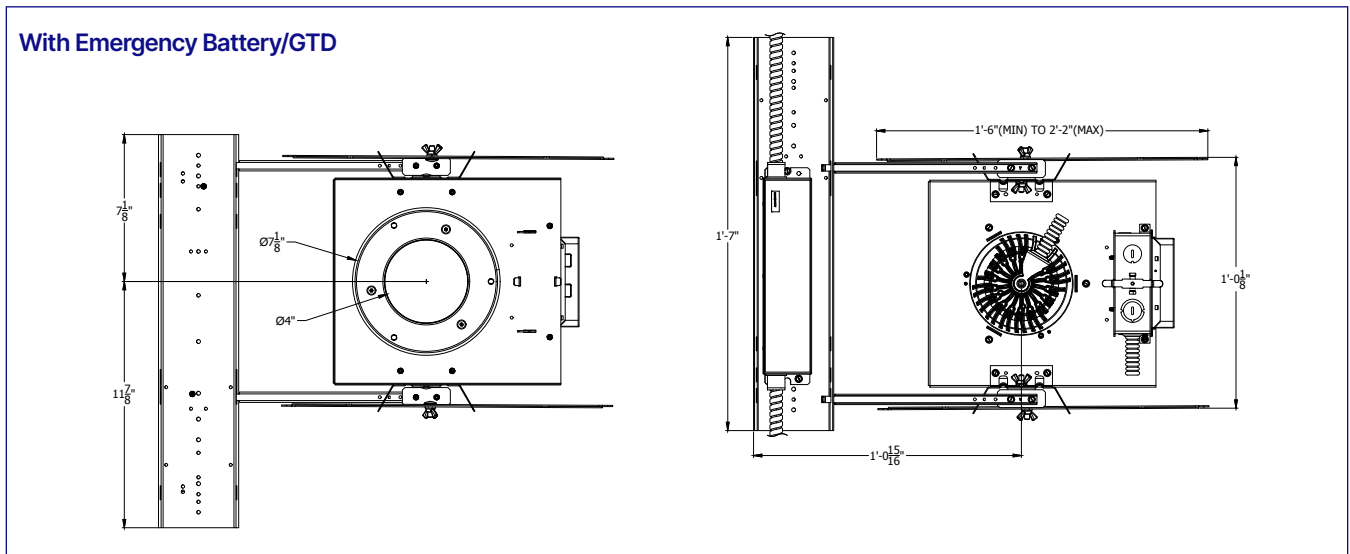
## Dimensions



### Chicago Plenum

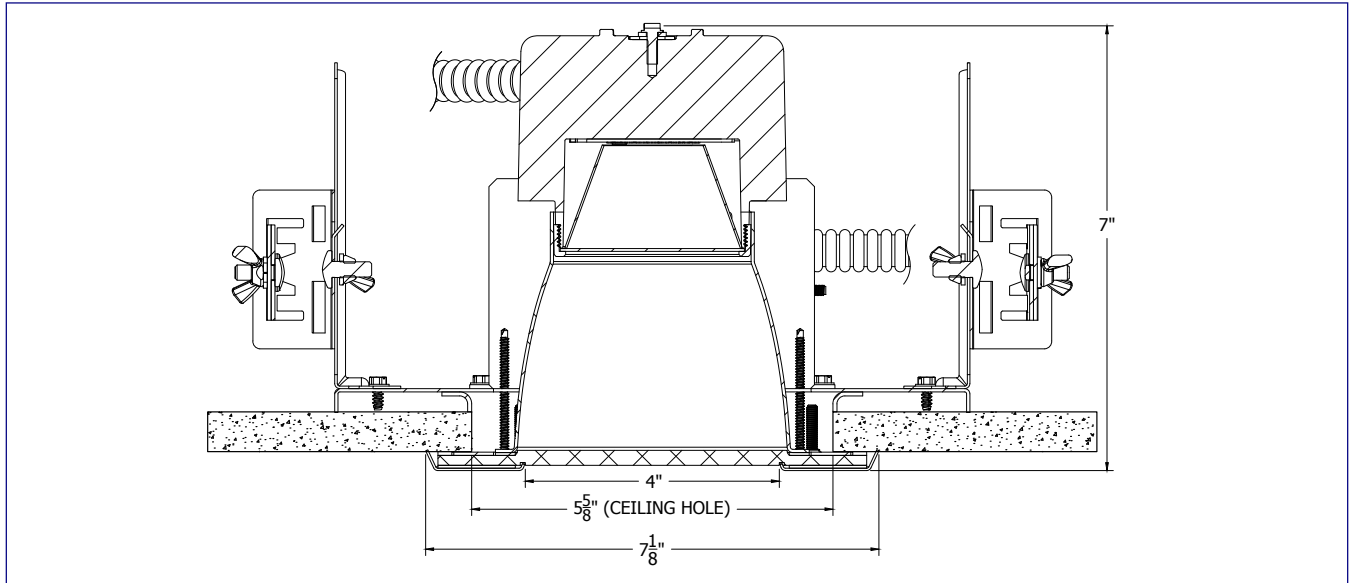


### With Emergency Battery/GTD

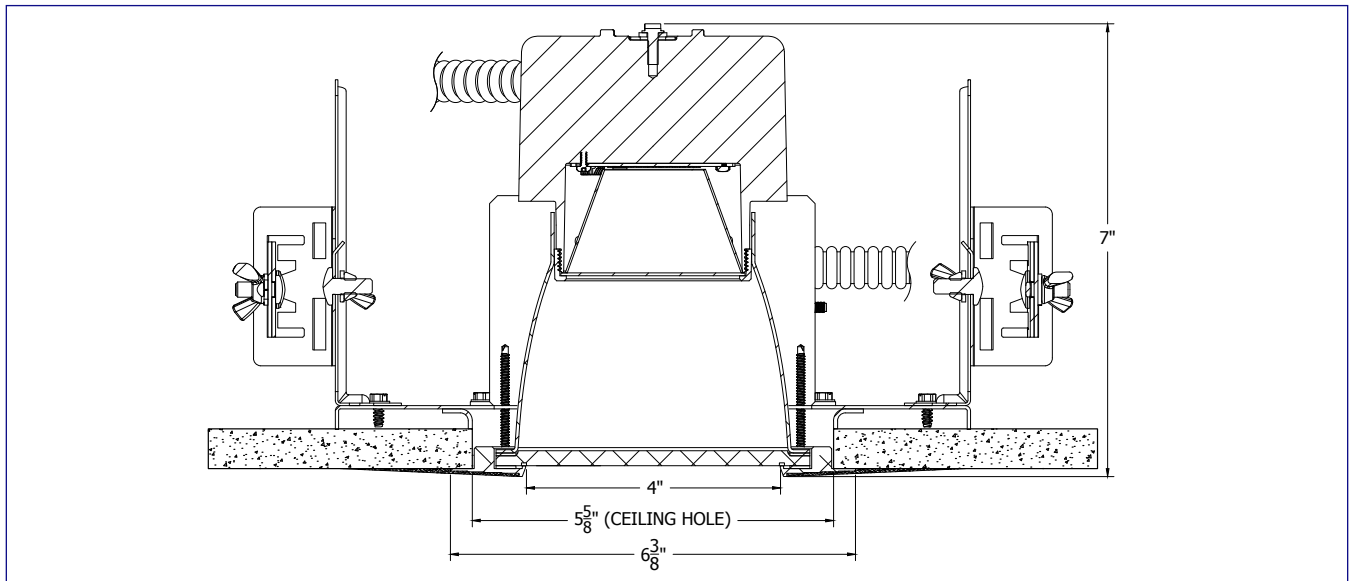


## Cross Section Details

### F Option

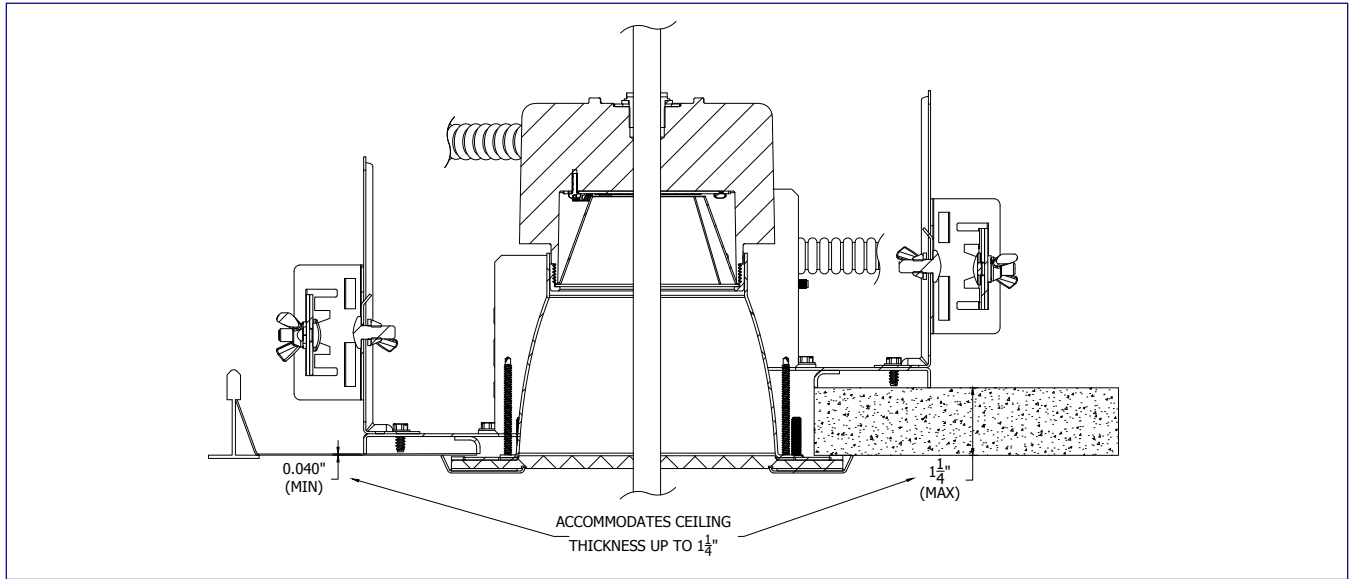


### G Option



## Details

### Finished Ceiling Thickness



### Finished CTA Ceiling Thickness

